

Tavola 26



Vista Aerea - 1

Luigi R. Biondi

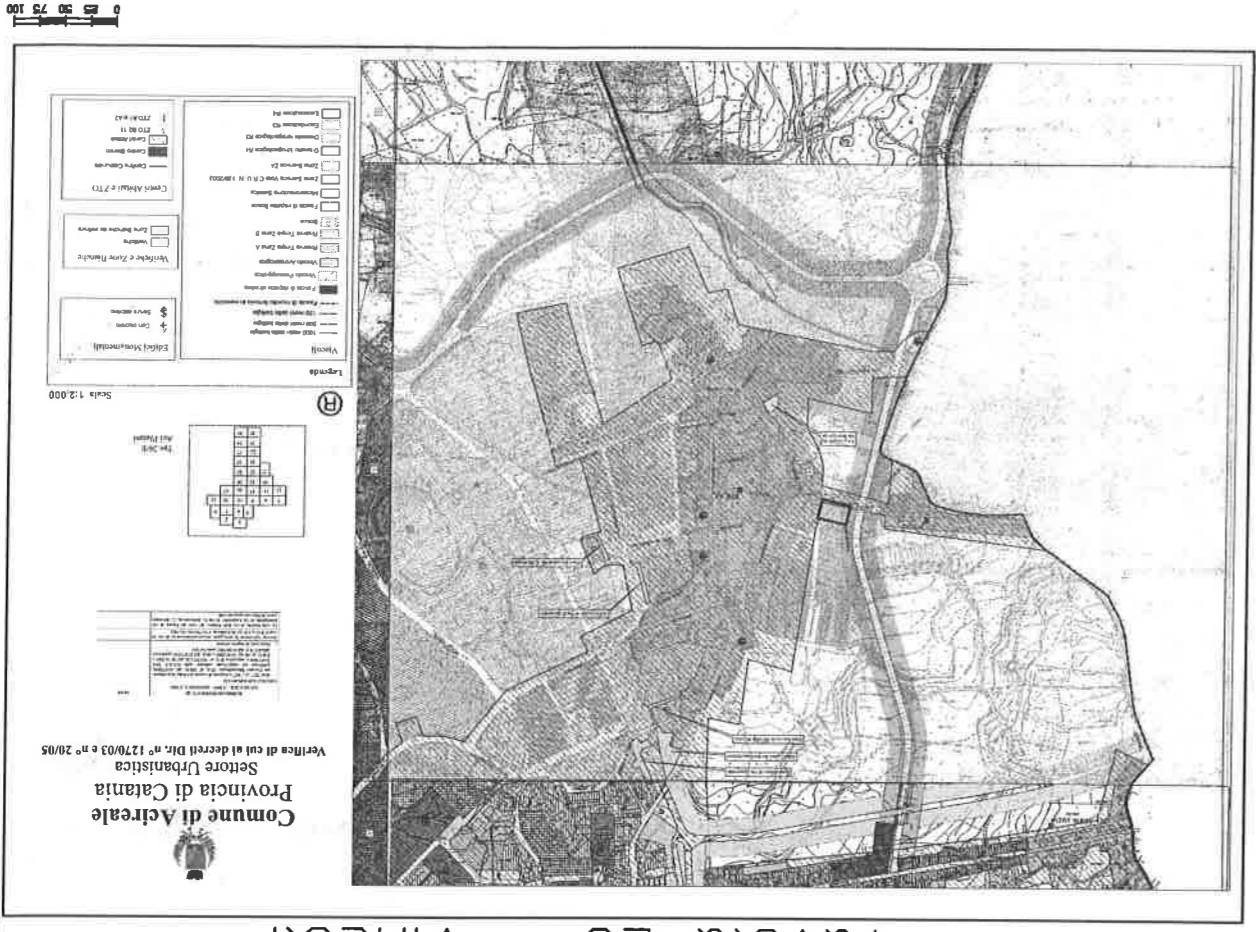
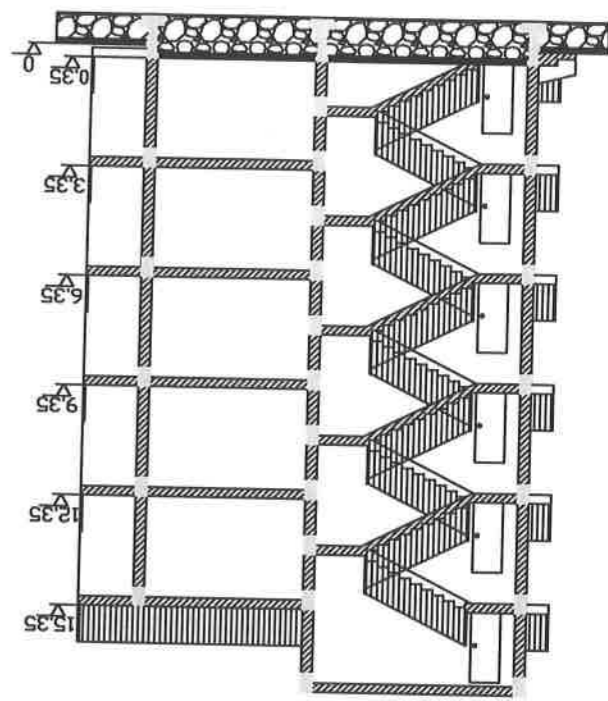


Tavola 26 - Vincoli

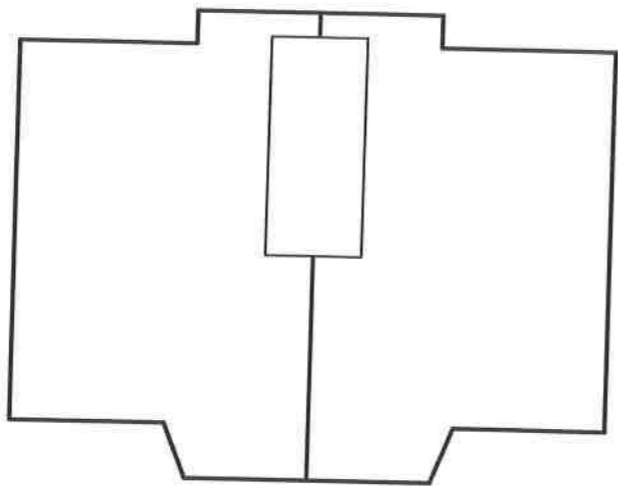


Vista Aerea - 2

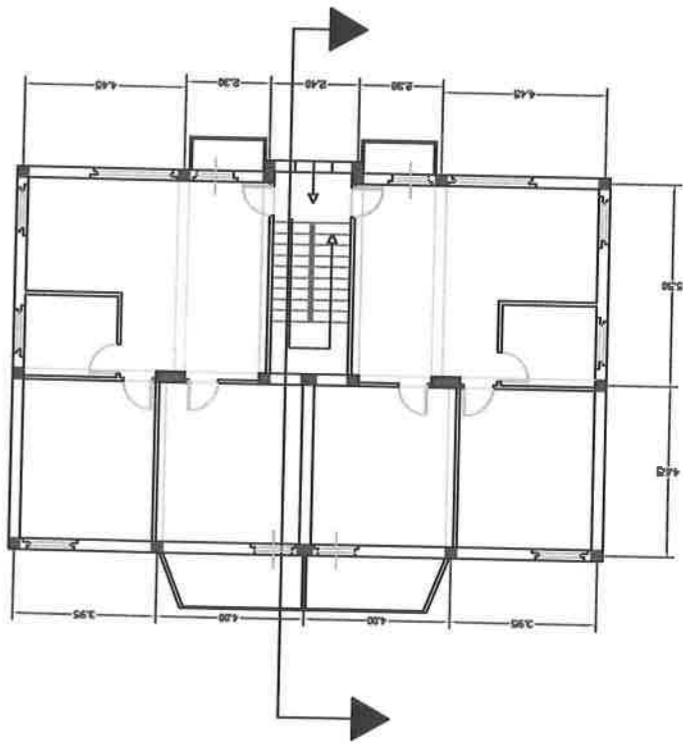




Sezione edificio EST



Pianta Piano Copertura



Pianta Piano TIPD



PARAMETRI

Base = 16,20 x 10,45 m

Altezza = 17,25 m

Superficie Fondazioni = 1102,29 m²

Superficie Cubatura massima = 440,92 m²

Volumetria massima = 3306,87 m³

DATI URBANISTICI DA P.R.G. COMUNE DI ACIREALE - ZONA C4

Hmax = 17,50 m

lef = 3,00 m³/m²

Rc = 0,40 m³/m²

Volumetria massima realizzabile Residenziale = 2751,906 m³

Volumetria massima realizzabile Commerciale = 0,00 m³

Volumetria massima realizzabile Terziaria = 0,00 m³

Superficie Coperta massima realizzabile = 310,00 m²

VERIFICA VOLUMETRIA IN PROGETTO

Volumetria Residenziale

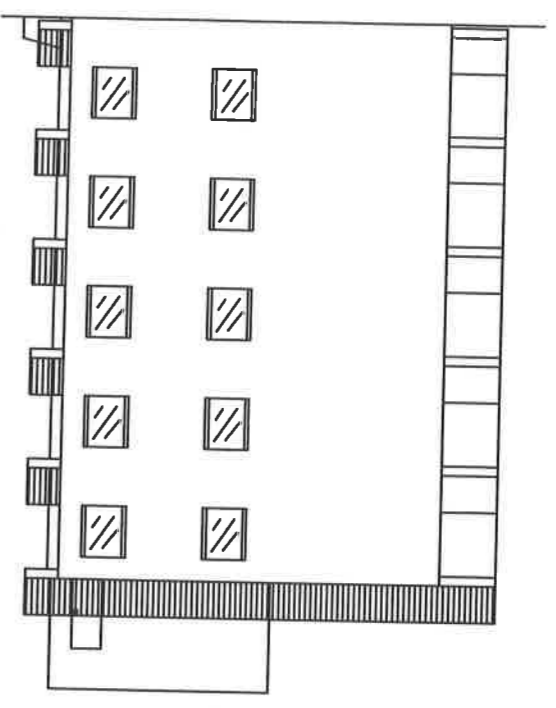
-Determinazione Superficie Utile Lorda Piano Terreno/Primo/Secondo/Terzo/Quarto:

S_{piano} = (16,20 x 10,45) - (2,10 x 5,50) = 169,29 - 11,55 = 157,74 m²

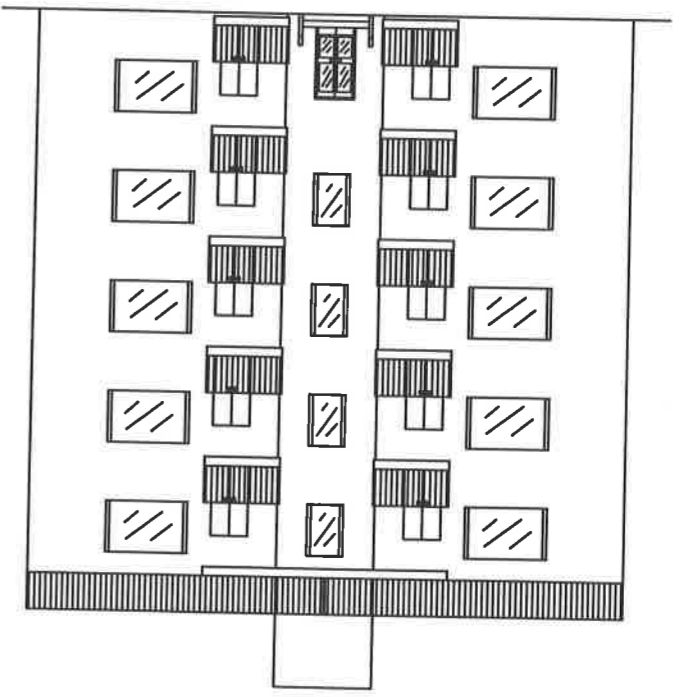
S_{totale} = 157,74 x 5 = 788,70 m²

-Determinazione Volumetria Residenziale Piano Terreno/Primo/Secondo/Terzo/Quarto:

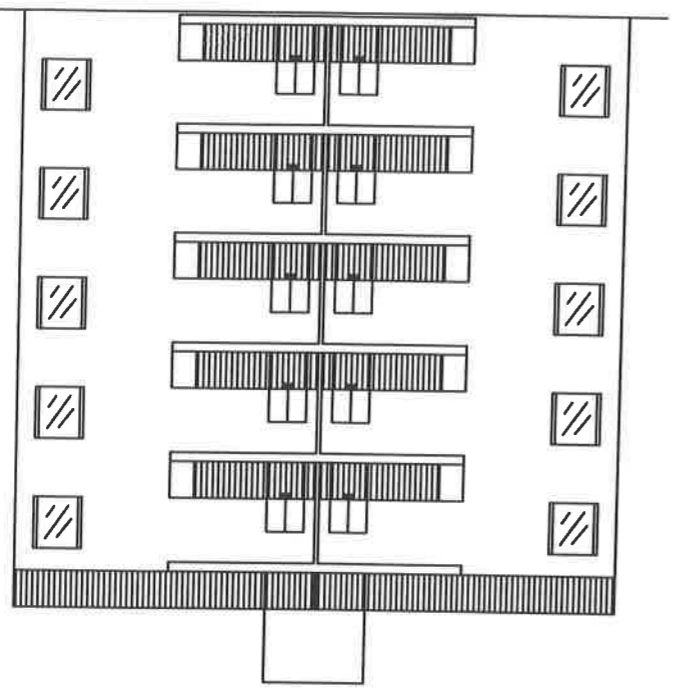
V = 788,70 x 3 = 2366,10 m³



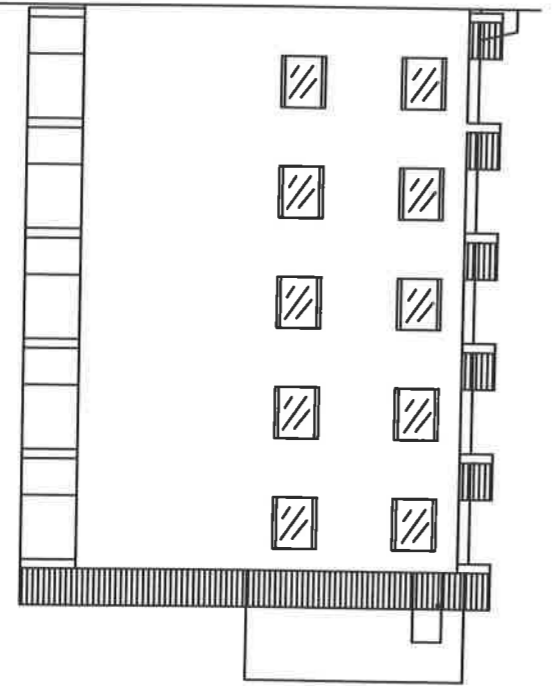
Prospetto SUD



Prospetto EST

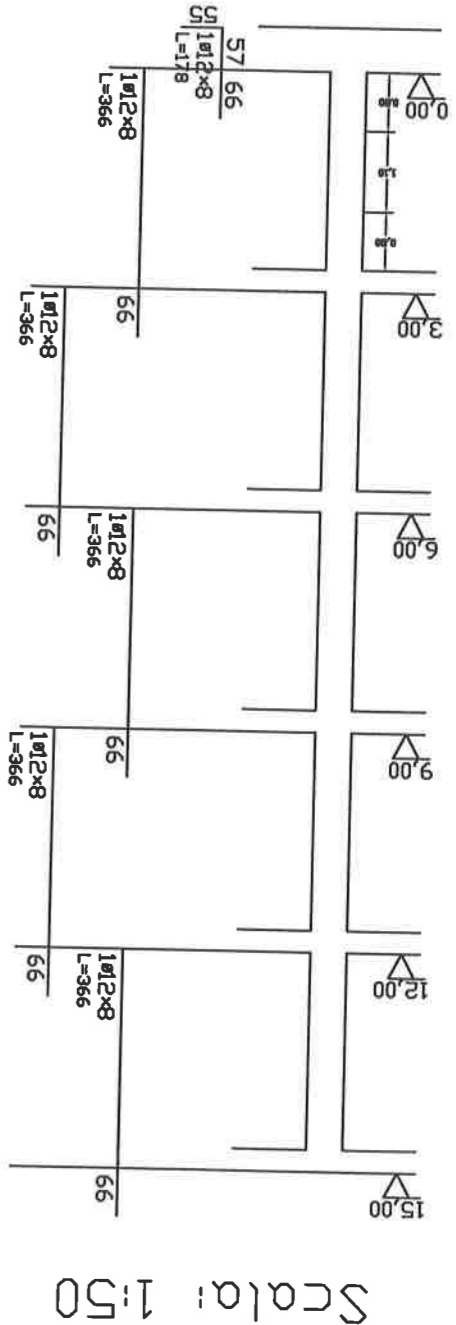


Prospetto OVEST

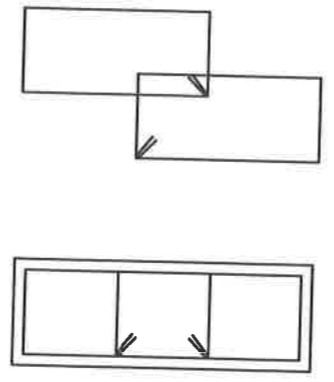


Prospetto NORD

Prospetti edificio



Scala: 1:50



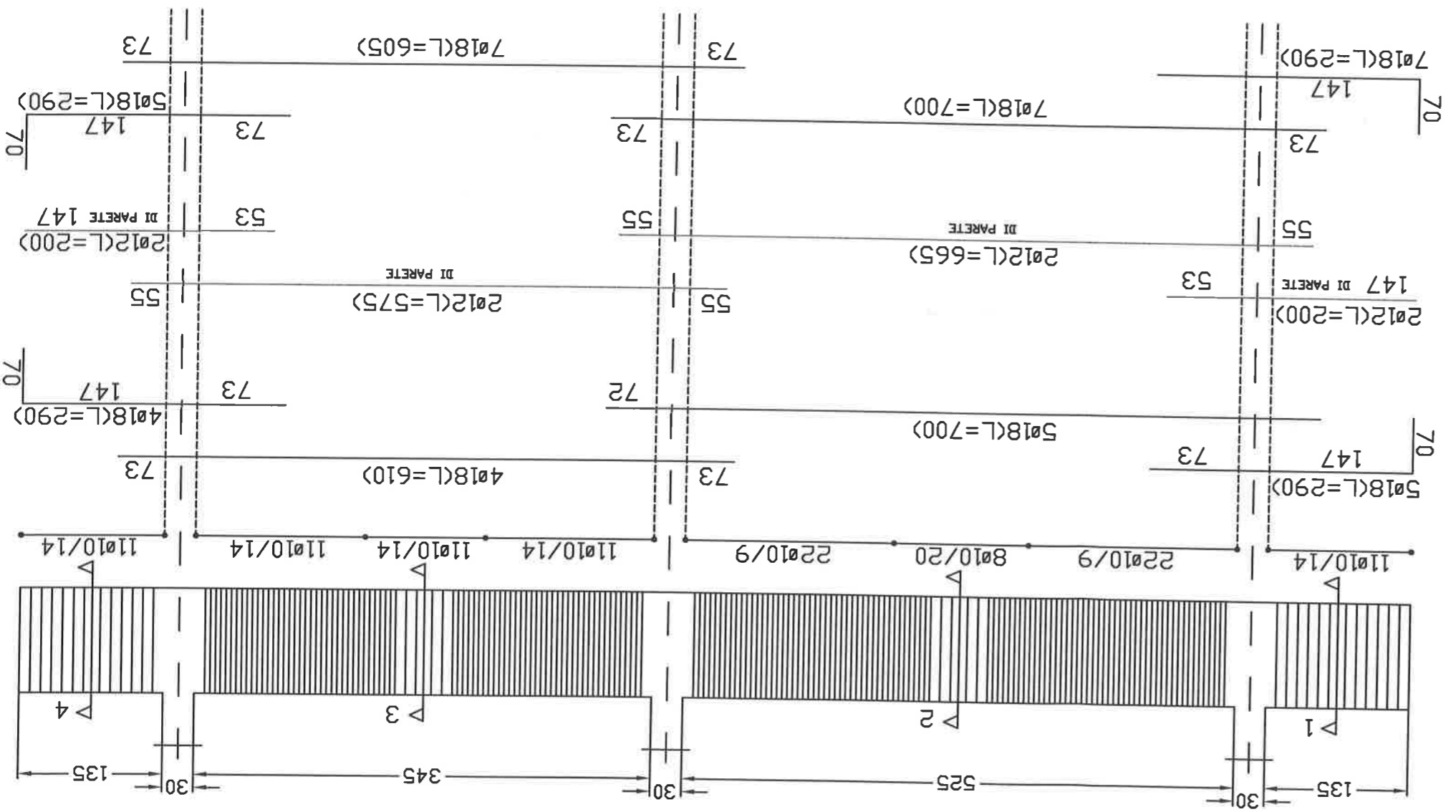
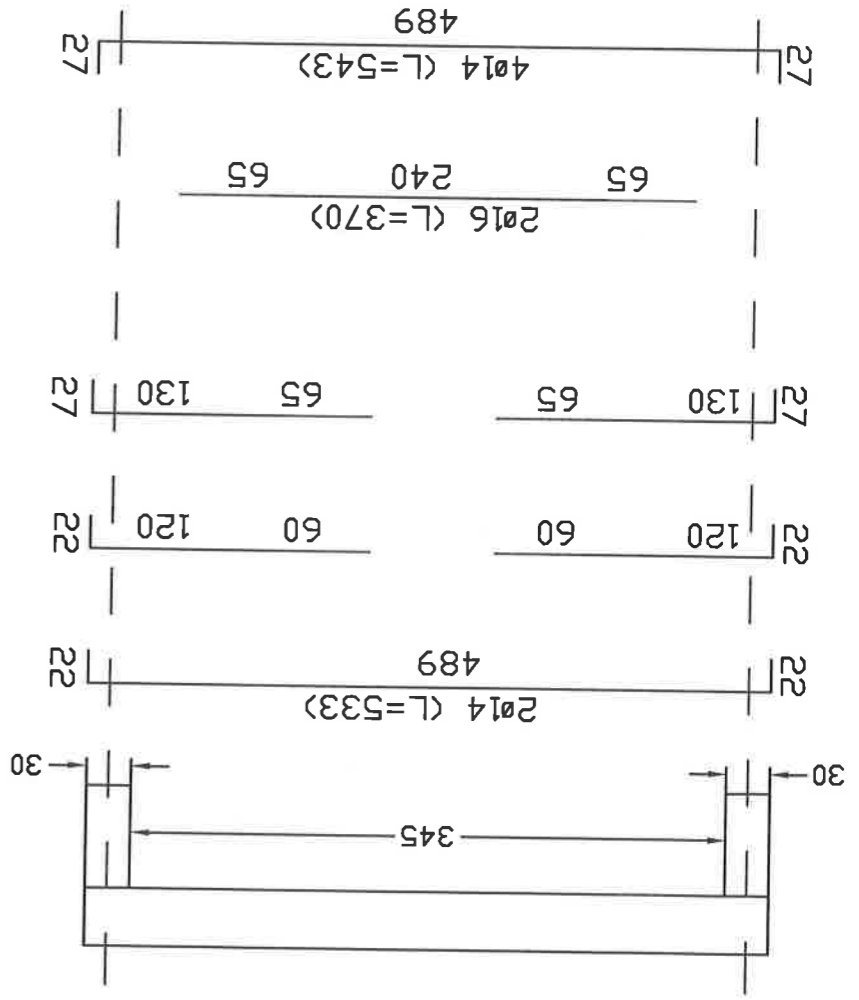
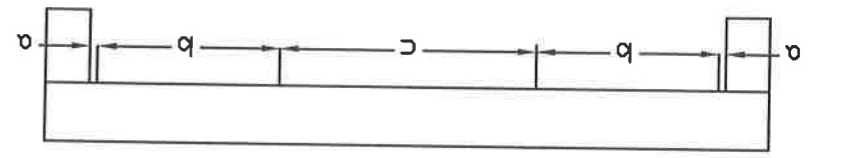
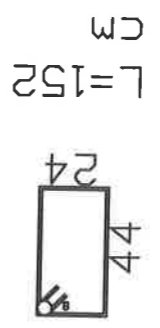
Scala: 1:10

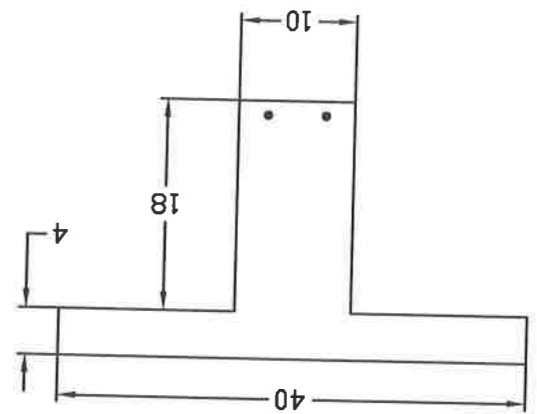
Pilastro Tipo 1,30x0,80m

Posizione a (L=0,80m)
8ø7,5

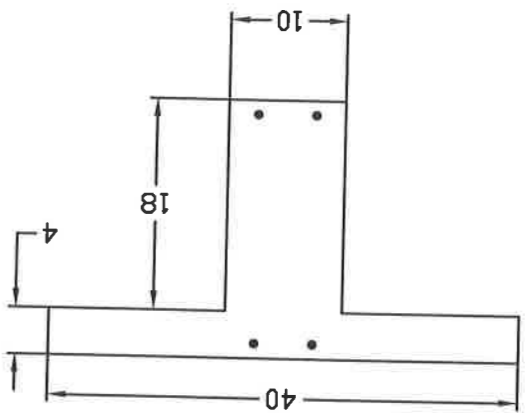
Posizione c (L=1,10m)
8ø14

Posizione a (L=5 cm)
 Ø8
 Posizione b (L=125 cm)
 Ø8/9
 Posizione c (L=175 cm)
 Ø8/20

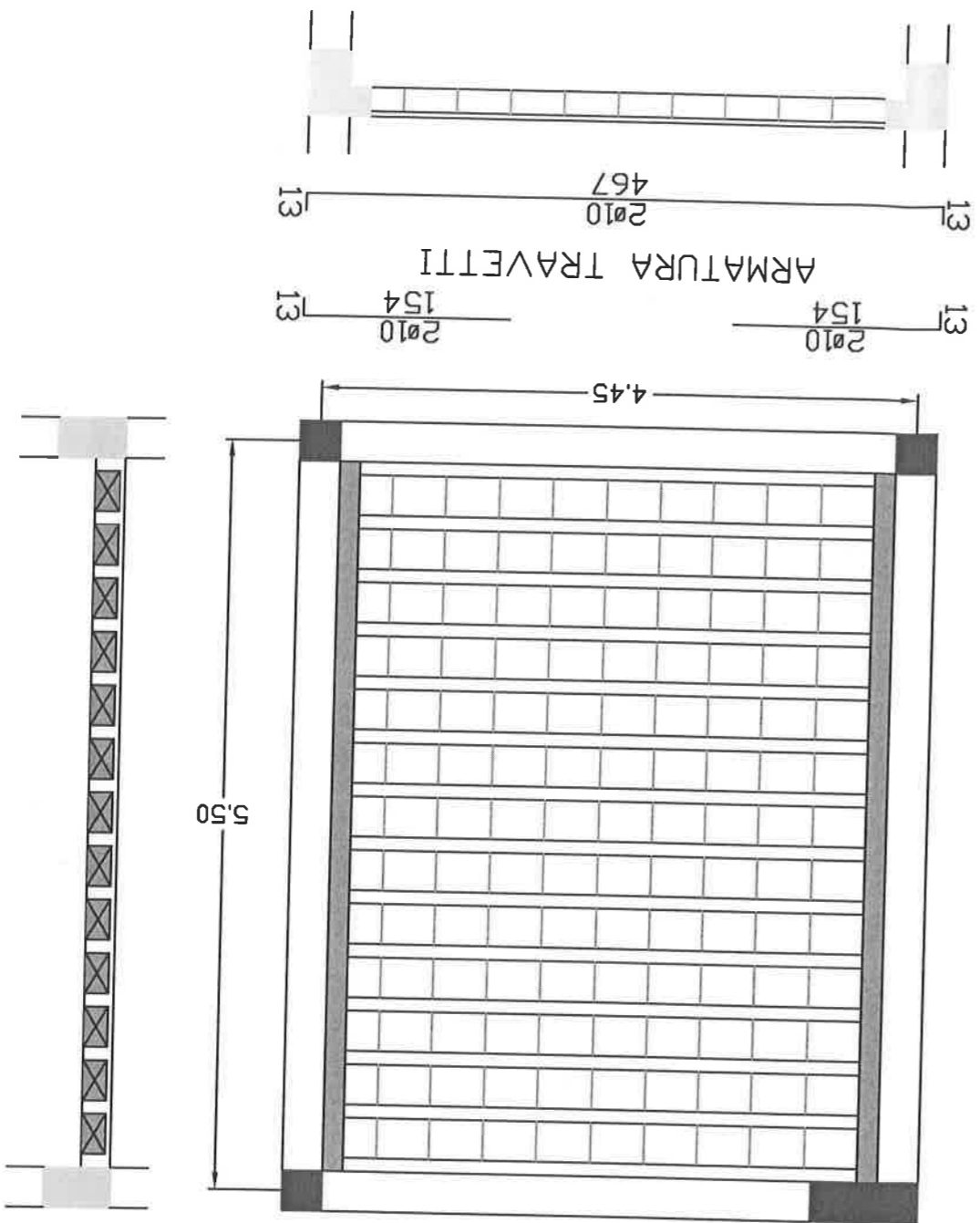


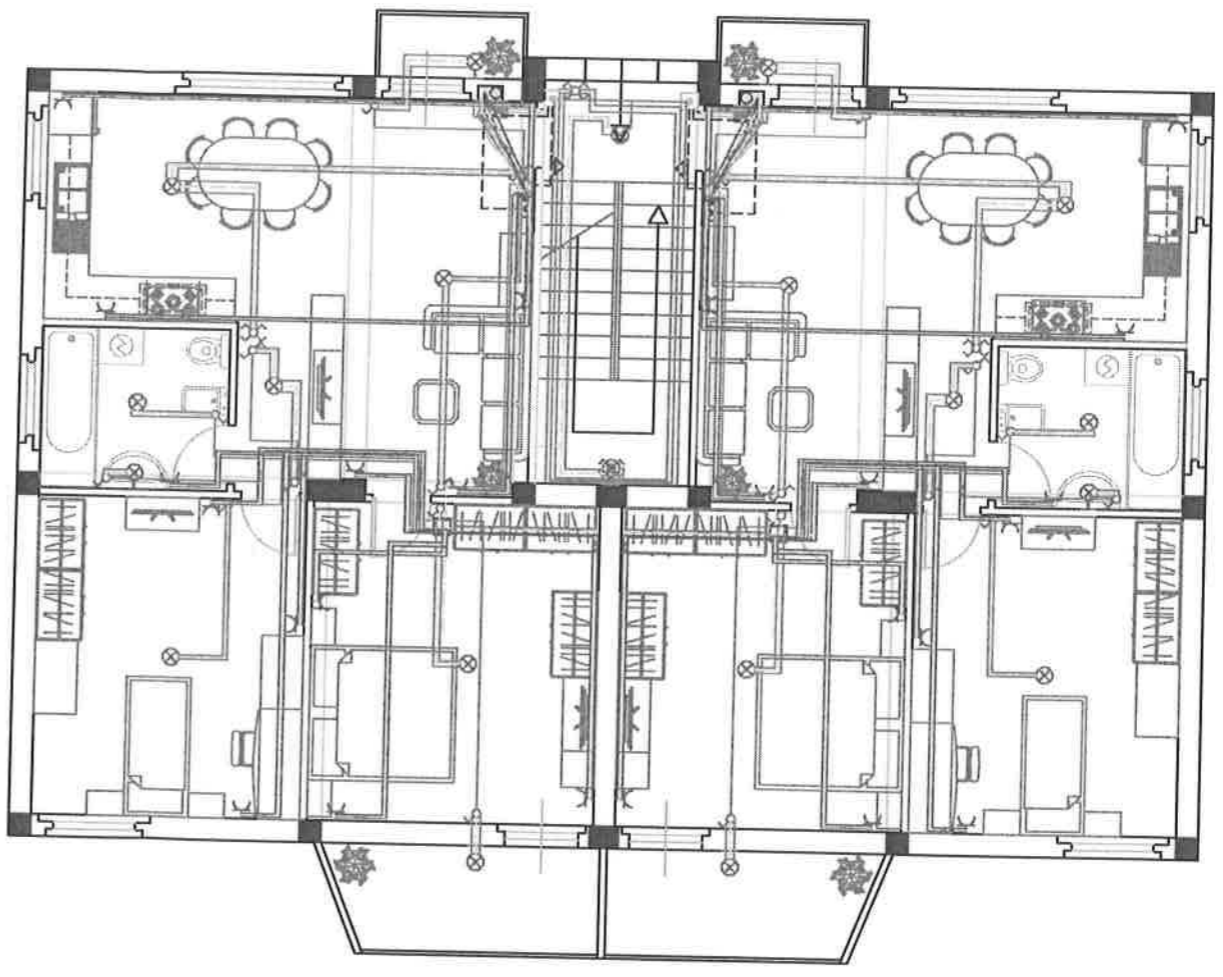


Sezione
in mezzeria










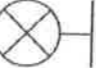


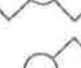

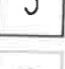



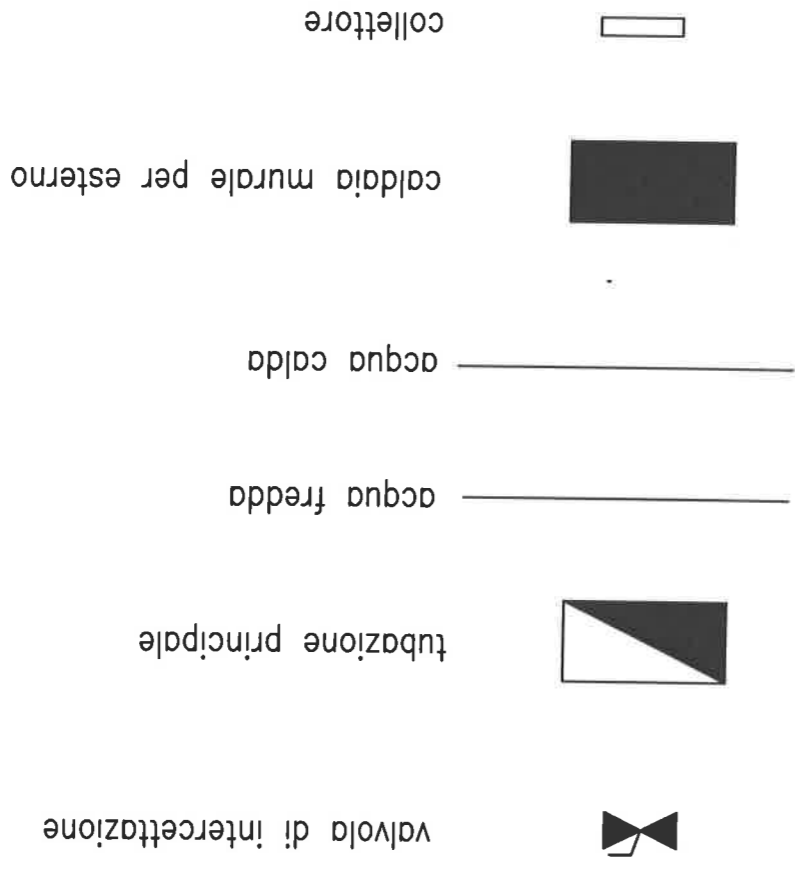
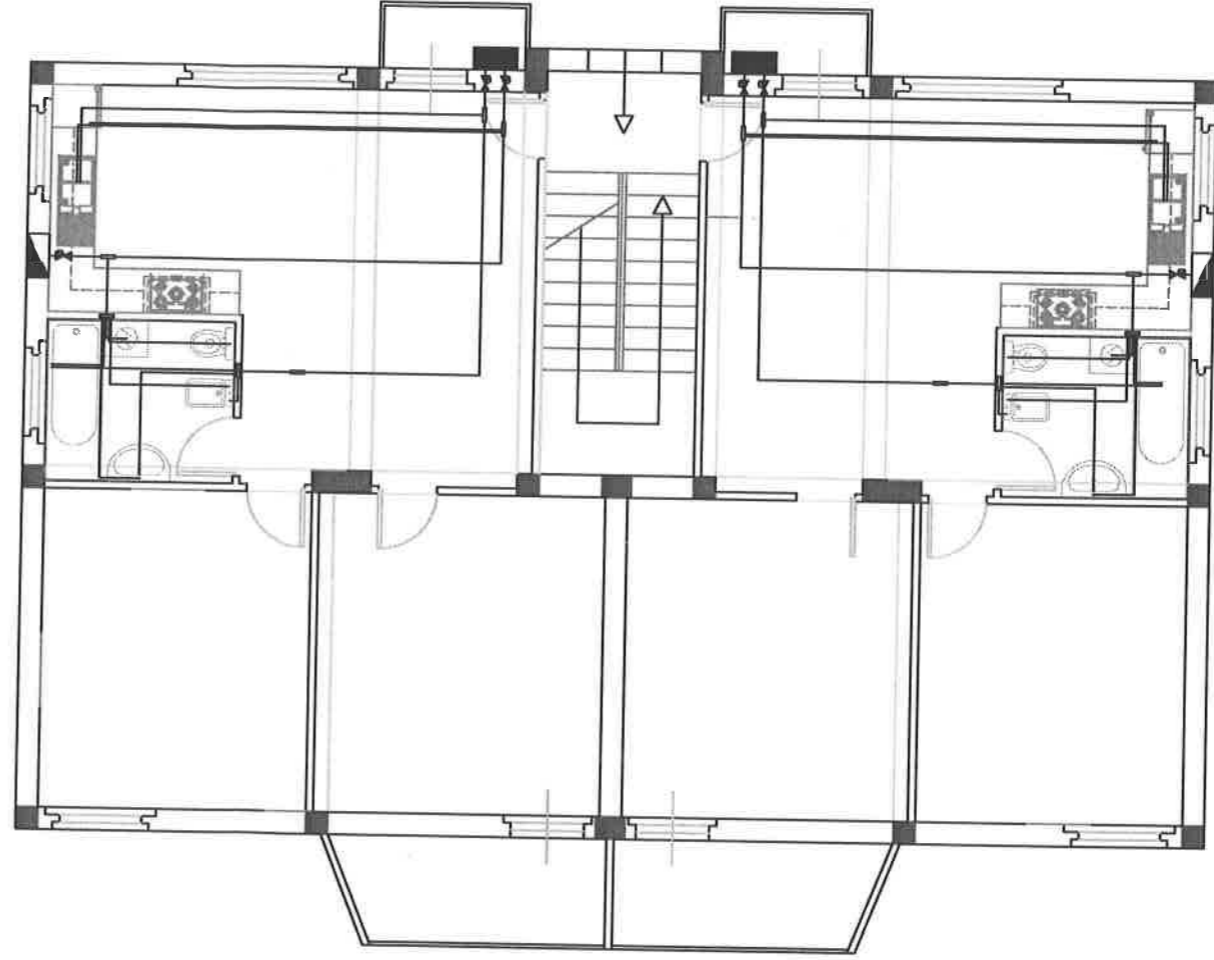
Sezione
all'incastro



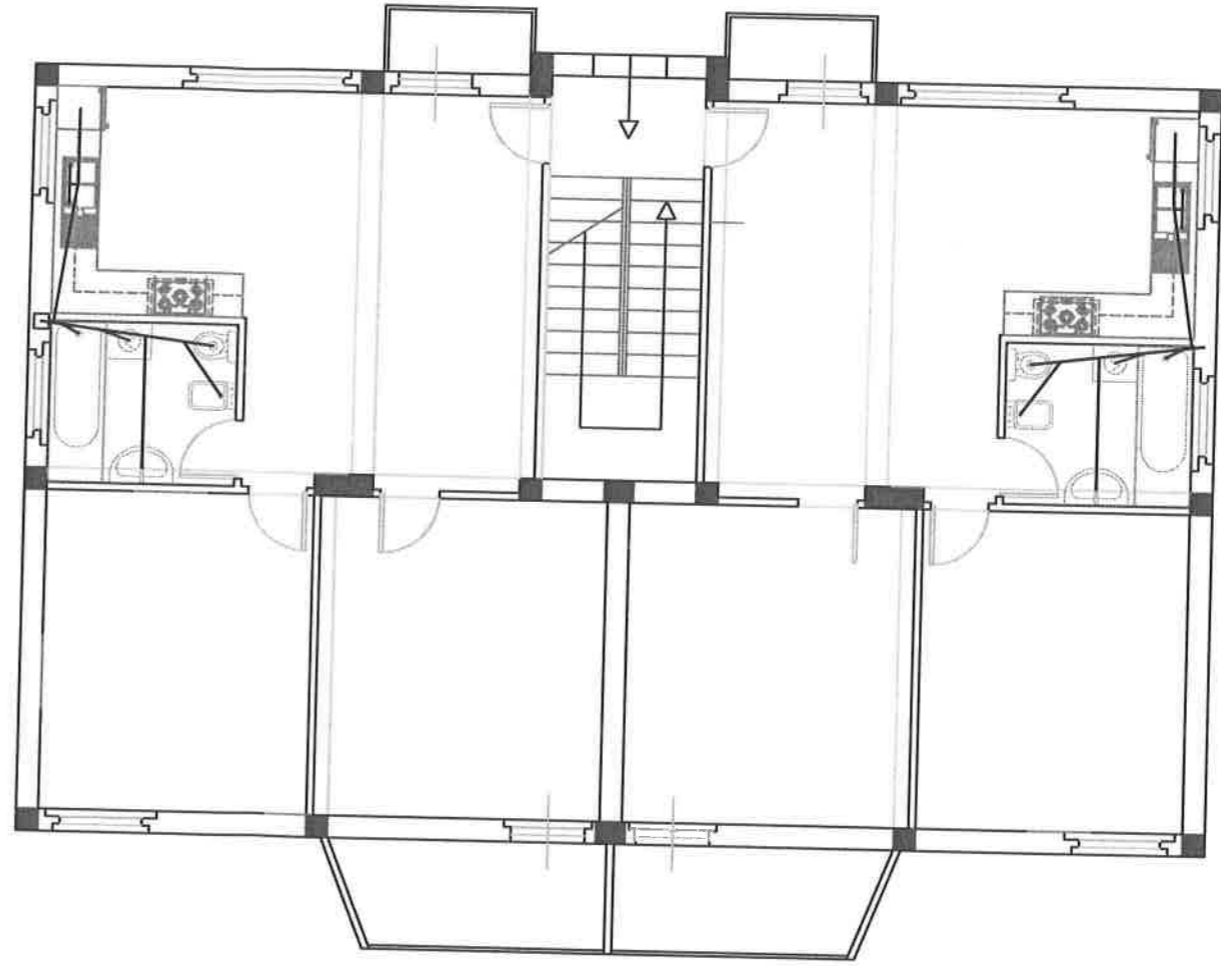


LEGENDA SEGNI GRAFICI

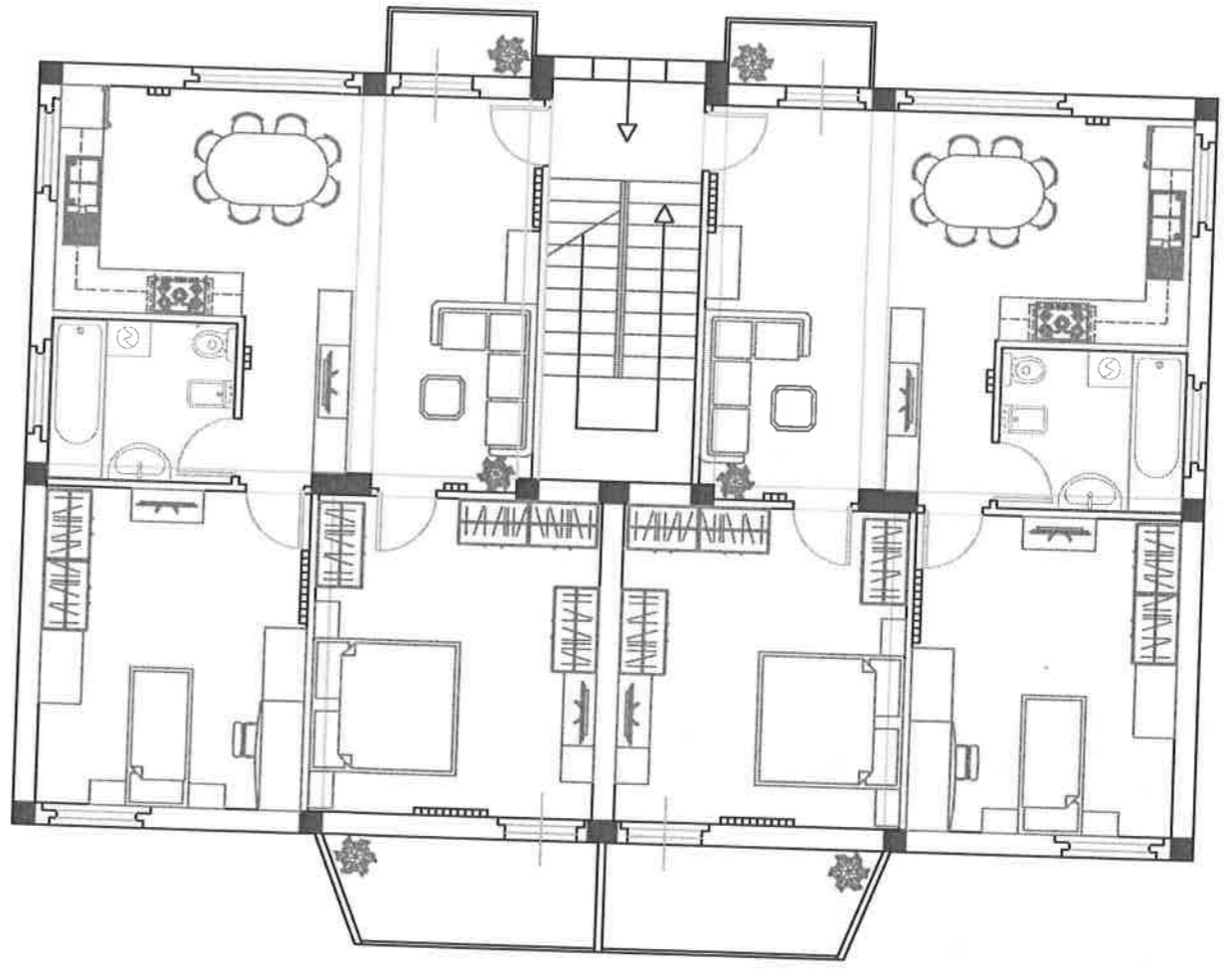
-  QUADRO ELETTRICO
-  MONTANTE LINEE ELETTRICHE CON SIGLA IDENTIFICATIVA
-  TRATTO LINEA ENERGIA
-  TRATTO LINEA LUCE
-  CONDUTTORE DI TERRA-DI PROTEZIONE
-  PRESA SINO 1000W 10A
-  PRESA SINO 220W 16A
-  SCATOLA DI ATTESTAMENTO - DERIVAZIONE
-  CENTRO LUCE
-  CENTRO LUCE A PARETE
-  INTERRUITTORE COMANDO LUCI
-  DEVIATORE COMANDO LUCI
-  INVERTITTORE COMANDO LUCI
-  PULSANTE CAMPANELLO CON TARGA PORTANOME
-  POSTAZIONE CITOFONICA INTERNA COMPLETA DI APRIPORTA
-  RONZATORE



LEGENDA SEGNI GRAFICI



□ colona di scarico



□ elemento termo sifone
○ caldaia 7kw